
Welcome!

Intro to the Arches Platform

Part 1 of 4 – Arches Capabilities

Thursday, October 17, 2019



Intro to the Arches Platform Upcoming Webinars

Part 1

Capabilities

Part 2

Data Management Tools

Part 3

Data Technology Concepts

Part 4

Information Architecture

Webinar Agenda

- **Background**
- **Arches Platform Overview**
- **Arches Platform Capabilities**
 - **Data Management Overview**
 - **Data Visualization & Discovery**
- **Questions & Answers**

Arches Project Background

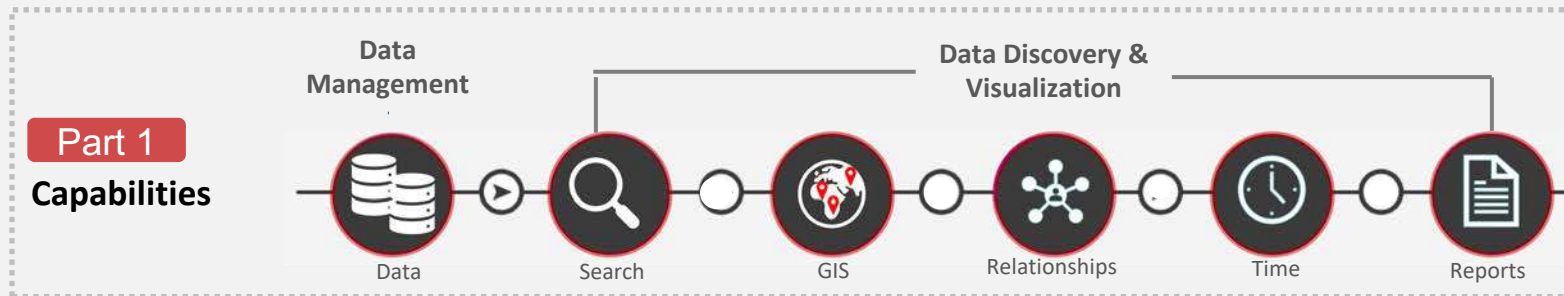
Developed jointly by the Getty Conservation Institute and World Monuments Fund, **Arches is an open-source software platform purpose built for cultural heritage data management.**

Arches is supported by a growing community of heritage, preservation and technology professionals.

About the Arches Platform

- Open Source and free – no licensing fees and unlimited users.
- Enterprise-level software
- Independent deployment by an organization or institution.

Arches Platform Overview



Part 2 Data Management Tools

- Arches Collector – Mobile App
- Resource Manager
- Arches Designer
- Reference Data Manager

Part 3 Data Technology Concepts

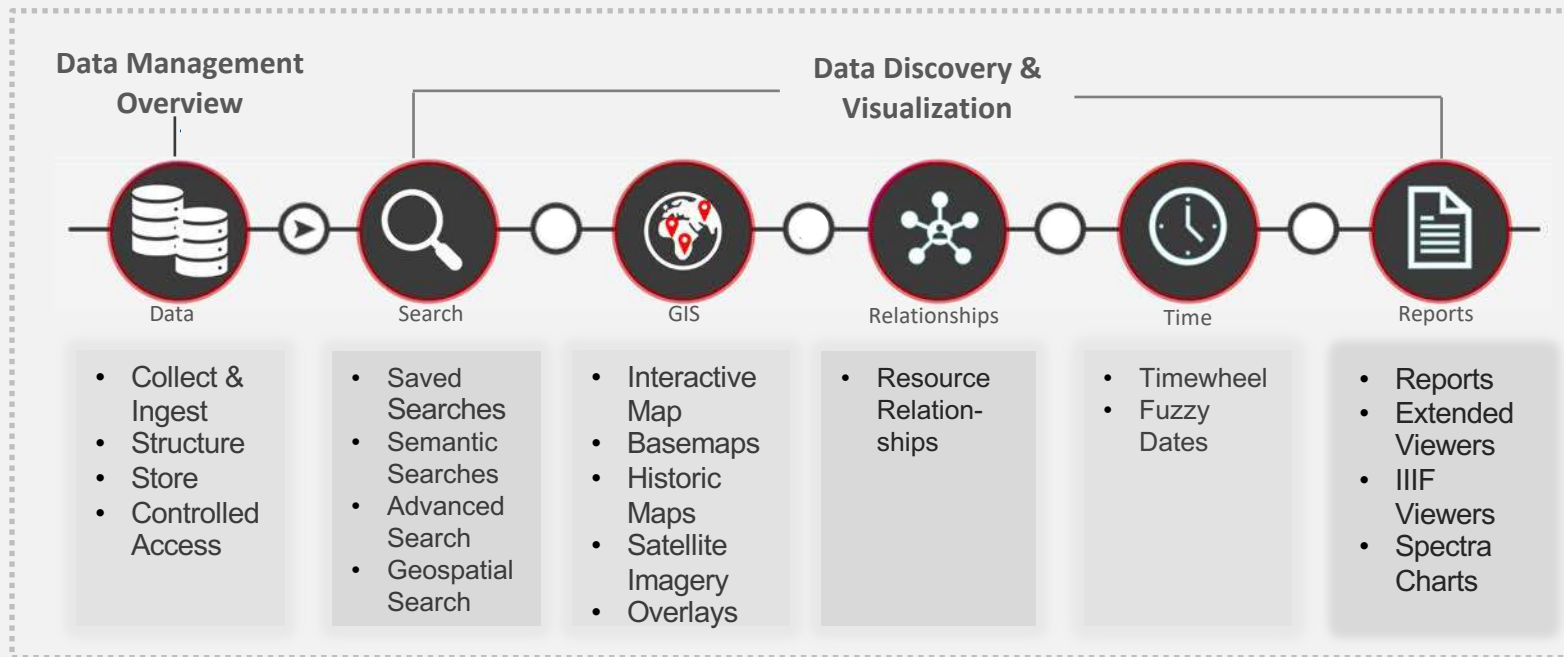
- Data Standards
- Semantics/ Ontologies (incl. CIDOC CRM)
- Controlled Vocabularies
- Fuzzy Dates

Part 4 Information Architecture

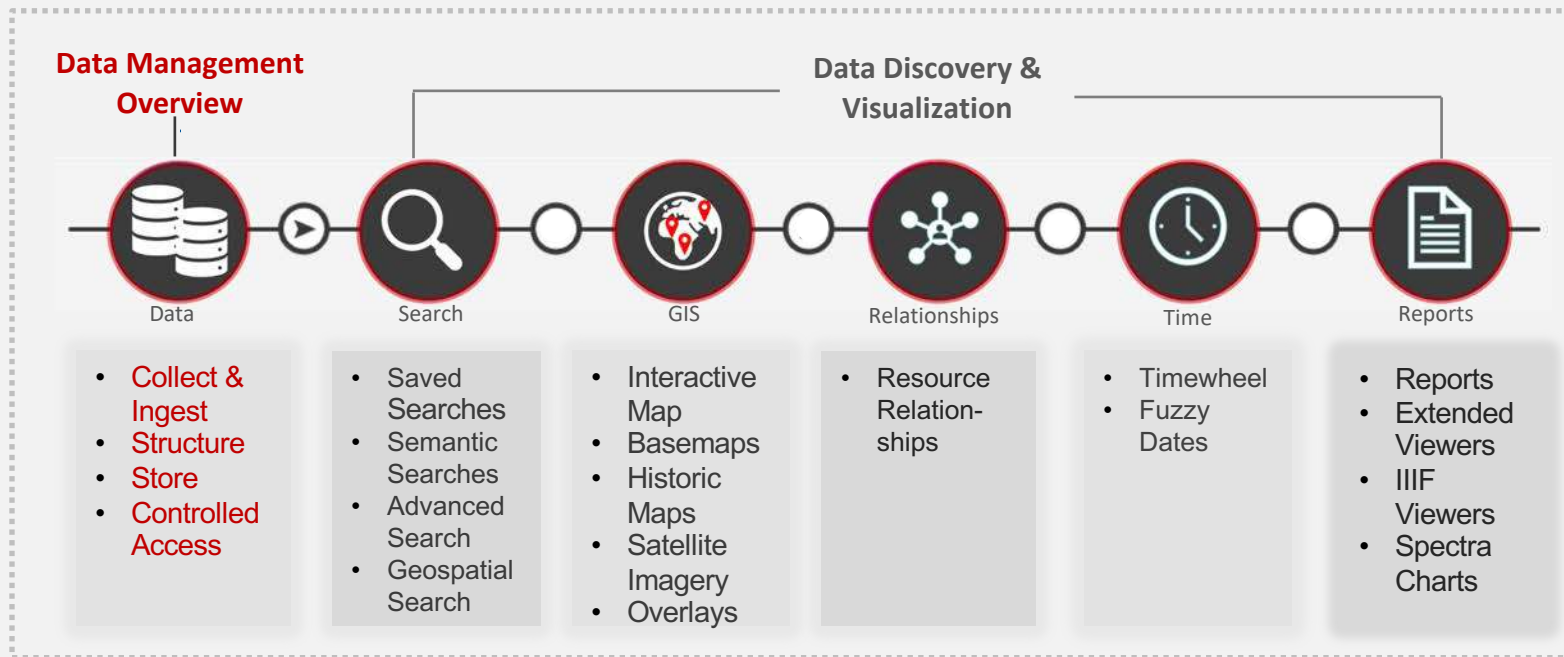
- Software Stack
- Software Standards

Arches Platform Capabilities

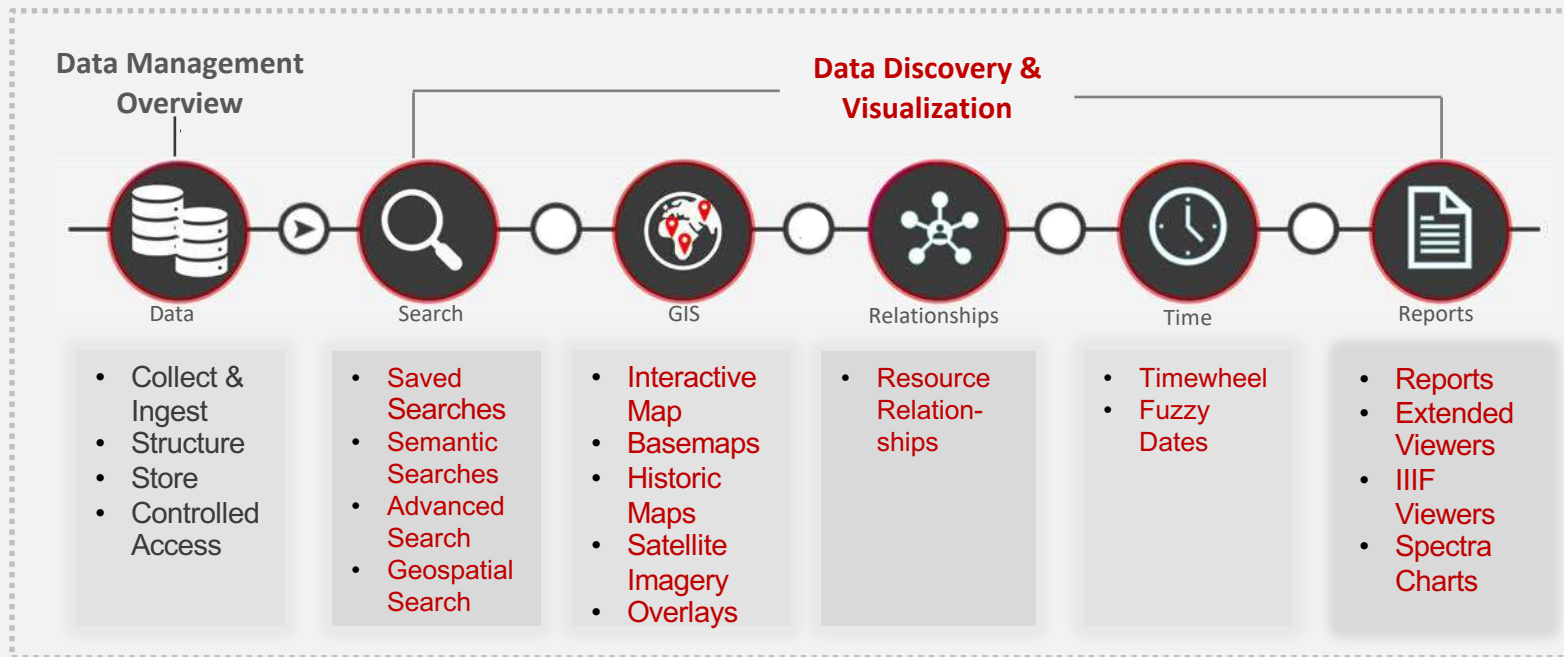
Arches Platform Capabilities



Arches Platform Capabilities



Arches Platform Capabilities





The online heritage information and management system for the City of Lincoln

Arcade lets you explore Lincoln's rich heritage in new ways - from an individual historic building, to the development of the Roman city of Lindum Colonia. Explore the Arcade site and use our powerful search engine to discover more about this ancient city.

Click one of the buttons below to find out about the ways you can search Arcade.



Map Search >



Time Search >



Advanced Search >



HIGHLIGHTED FEATURES: Interactive Map, Basemaps, Historic Maps, Map Overlays, Geospatial Search

ARCADE, the Arches-powered online heritage information and management system for the City of Lincoln, UK: <https://arcade.lincoln.gov.uk>



arches

Search

Find a resource...

Results: 831

QA Type Select...

QV 19

The shaft of QV 19 has a masonry surround spanned by a metal grill or mesh. E. Thomas was unable to enter the tomb, but noted that it...

Edit Map Related Resources

Tomb of Anonymous

QV 21 has two elongated chambers (C) and (E) on different axes. The shaft has a cement-coated masonry surround at its opening as well as a metal grill with mesh...

Edit Map Related Resources

QV 36

The tomb is entered through ramp (A) leading into the main chamber (C). Two side chambers, (G) and (E), on axis with each other, lie to the north and south of chamber (C), on t...

Edit Map Related Resources

QV 42

QV 42 is entered through ramp (A), which leads into long corridor (C) and into the pillared burial chamber (E) with central sunken floor and three barrel vaults running...

Edit Map Related Resources

Tomb of Sethherkhepshef

This tomb is accessed by ramp (A) that leads into two successive corridors (C) and (E), separated by doorway (D). Chamber (G) lies on axis with the tomb and opens to rear...

Edit Map Related Resources

QV 04

As of February 2010, QV 4 has been reburied. The plan, completed by the Theban Mapping Project show two chambers - a northerly chamber (D) located under the...

Map Time Saved Advanced Related

Mapbox

Mapbox © OpenStreetMap. Improve this map © DigitalGlobe



HIGHLIGHTED FEATURES: Saved Search, Related Resources, Reports

Arches Sample Instance using data about Frank Lloyd Wright legacy in Los Angeles.



Q Search

Welcome, Lindsey ?

Find a resource...

Results: 831

QA Type Select

QV 19
The shaft of QV 19 has a masonry surround spanned by a metal grill or mesh.
E. Thomas was unable to enter the tomb, but noted that it...

QV 36
The tomb is entered through ramp (A) leading into the main chamber (C). Two side chambers, (G) and (E), on axis with each other, lie to the north and south of chamber (C), on L...

QV 42
QV 42 is entered through ramp (A), which leads into long corridor (C) and into the pillared burial chamber (E) with central sunken floor and three barrel vaults running...

Tomb of Sethherkhepshef
This tomb is accessed by ramp (A) that leads into two successive corridors (C) and (E), separated by doorway (D). Chamber (G) lies on axis with the tomb and opens to rear...

QV 04
As of February 2010, QV 4 has been reburied. The plan, completed by the Theban Mapping Project show two chambers - a northerly chamber (D) located under the...

Map Time Saved Advanced Related

Map

Locate a Place or Address

Wilton Historic District

Hancock Park

Country Club Park

Koreatown

Carthay

Park La Brea

Mapbox © OpenStreetMap. Improve this map © DigitalGlobe



HIGHLIGHTED FEATURES: Geospatial Search, Semantic Search, Advanced Search

Arches Sample Instance using data from the City of Los Angeles

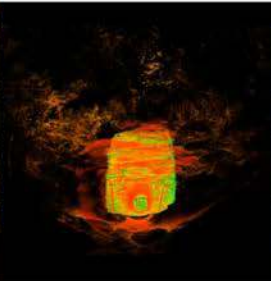




Heritage Sites



Château de La Roche-Guyon
France



Allée couverte du Bois Couturier
France



Early Christian Basilica of
Sofiana
Italy



Morgantina
Italy



Archaeological Museum of
Aidone
Italy



Molinos de Campo de Criptana
Spain



HIGHLIGHTED FEATURES: Extending core Arches,
Reports, 3D Viewers

Global Digital Heritage, <https://www.globaldigitalheritage.org/>



Coming Next!

Intro to the Arches Platform Upcoming Webinars

Part 1

Capabilities

- Data Management
- Data Discovery & Visualization

Part 2

Data Management Tools

- Arches Collector – Mobile App
- Resource Manager
- Arches Designer
- Reference Data Manager

Part 3

Data Technology Concepts

- Data Standards
- Semantics/ Ontologies (incl. CIDOC CRM)
- Controlled Vocabularies
- Fuzzy Dates

Part 4

Information Architecture

- Software Stack
- Software Standards

Arches Q&A

- Thank you -

Share your feedback: contact@archesproject.org

Community Support - Arches Forum: www.groups.google.com/archesproject

Webinar repository – www.archesproject.org/videos

