
Welcome!

Intro to the Arches Platform

Part 2 of 4 – Data Management Tools

Wednesday, December 11, 2019



Webinar Presenters and Q&A Moderators



Alina Myklebust

Getty
Conservation
Institute



Annabel Enriquez

Getty
Conservation
Institute



David Myers

Getty
Conservation
Institute



Dennis Wuthrich

Farallon
Geographics
Inc

Intro to the Arches Platform Upcoming Webinars

Part 1

Capabilities



Part 2

Data Management Tools

Part 3

Data Technology Concepts

Part 4

Information Architecture

Webinar Agenda

- **About Arches**
- **Arches Platform: Capabilities Recap**
- **Arches Platform: Data Management Tools**
- **Coming Next**
- **Questions & Answers**

About Arches

Developed jointly by the Getty Conservation Institute and World Monuments Fund, **Arches is an open-source software platform purpose built for cultural heritage data management.**

About Arches (cont'd)

- Open Source and free – no licensing fees and unlimited users.
- Enterprise-level software hosted on a server
- Independent deployment by an organization or institution
- Supported by a growing community of heritage, preservation and technology professionals



Recap: Intro to the Arches Platform Part 1 - Capabilities



Visit www.archesproject.org/videos to access the webinar video, transcript and slides!

Webinar Repository – www.archesproject.org/videos




About ▾ Documentation ▾ Development ▾ Downloads ▾ Community ▾ 

Arches Videos


The following are videos that feature Arches. If you have put together a video about Arches and would like it included here (with attribution, of course), please let us know via email (contact@archesproject.org) or via our [Discussion Forum](#).

Webinars

These are videos that are related to Arches Webinars. When available, transcripts and slide decks will be included.

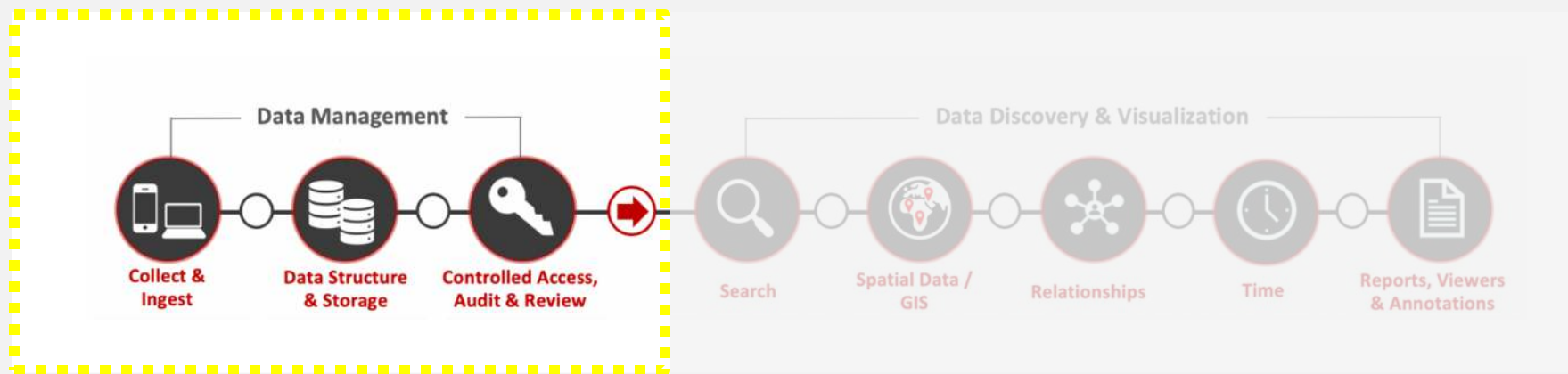


Intro to the Arches Platform: Part 1 – Capabilities + Q&A
by the Arches Team
[View Full Transcript \(PDF\).](#)
[View Slide Deck.](#)

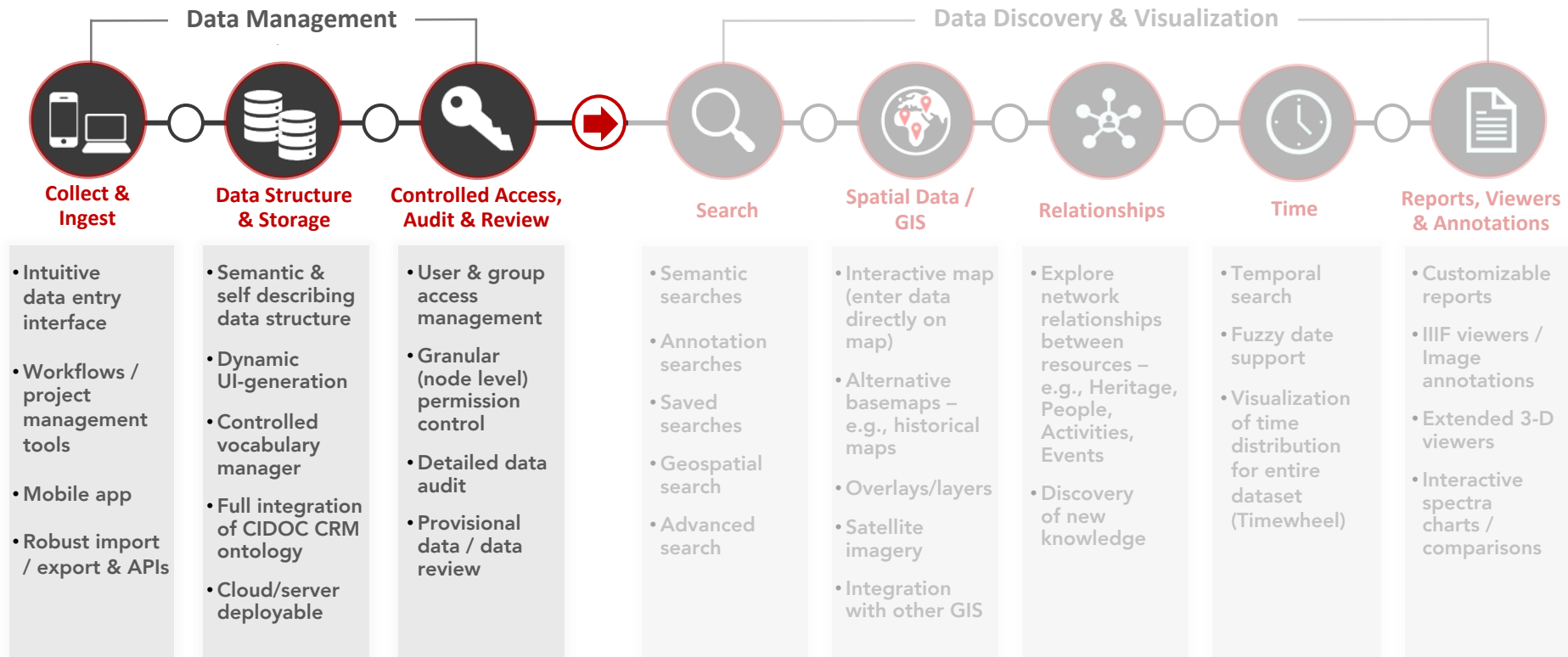


Arches Webinar: Arches Collector Preview and Q&A
by the Arches Team
[View Q&A Transcript \(PDF\).](#)
[View Slide Deck \(PDF\).](#)

Intro to Data Management Tools



Data Management Tools



How are Arches data management tools different?

Arches data management tools...

Arches data management tools...

...rapidly configure with no coding required.

Arches data management tools...

...rapidly configure with no coding required.

...streamline data management and web publishing.

Arches data management tools...

...rapidly configure with no coding required.

...streamline data management and web publishing.

...control permissions: who can access what data.

Arches data management tools...

...rapidly configure with no coding required.

...streamline data management and web publishing.

...control permissions: who can access what data.

...structure data to optimize search & visualization.

DATA MANAGEMENT TOOLS

ARCHES DESIGNER

Defines data model,
i.e. data fields, how
they are organized
and accessed



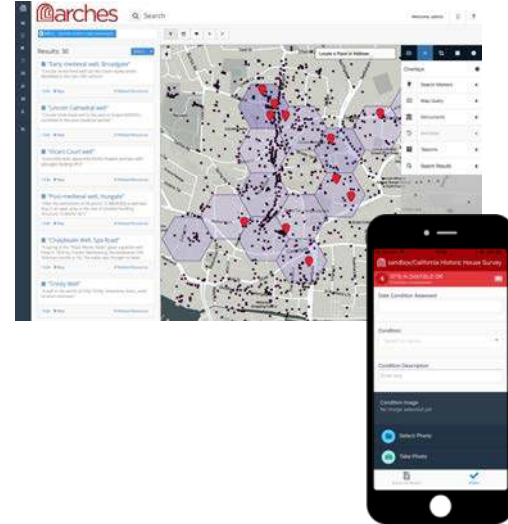
REFERENCE DATA MANAGER

Defines controlled
vocabularies
for data entry and
search



RESOURCE MANAGER

Manages data entry,
using the data fields
and values created in
Arches Designer &
Reference Data
Manager.



DATA MANAGEMENT TOOLS

ARCHES DESIGNER

Defines data model,
i.e. data fields, how
they are organized
and accessed



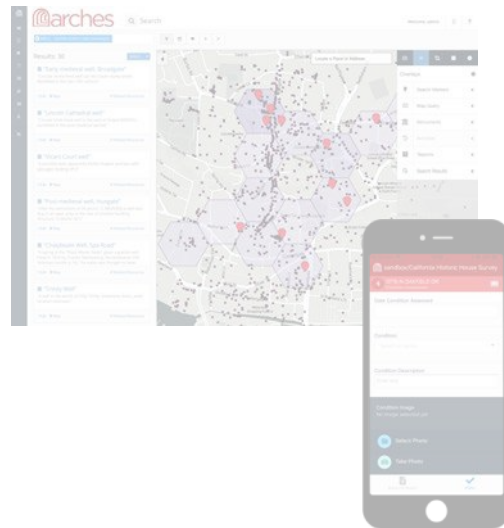
REFERENCE DATA MANAGER

Defines controlled
vocabularies
for data entry and
search



RESOURCE MANAGER

Manages data entry,
using the data fields
and values created in
Arches Designer &
Reference Data
Manager.



Arches Designer

- Design your database and dynamic generate user interface
- No coding necessary
- Permissions controls for data access
- Full integration of CIDOC CRM ontology
- Creates data models which can be shared

Manage ... Built Heritage Resource (Resource Model) Welcome, admin

Find a Resource Model/Branch... Design Preview Done

Graph Cards Permissions

Find a node, datatype, card...
+ Expand - Collapse

- Built Heritage Resource (E18)
- Name (E41)
- Condition Assessment (E14)
- Dates (E5)
- Photograph (E38)
- Location (E53)

Built Heritage Resource (CIDOC CRM v6.2, E18_Physical_Thing)

Resource Model Identifiers

Name
Built Heritage Resource

Subtitle
Subtitle

Ontology
CIDOC CRM v6.2

Root Class
http://www.cidoc-crm.org/cidoc-crm/E18_Physical_Thing

Configuration

Status
☒ Active ☐ Inactive

Resource models that may be related:
☐ Built Heritage Resource

ARCHES DESIGNER: Define data structure, data entry interface, permissions



Manage ... Built Heritage Resource (Resource Model) Welcome, admin

Find a Resource Model/Branch... Design Preview Done

Graph Cards Permissions

Find a node, datatype, card...
+ Expand - Collapse

Built Heritage Resource (E18)

- Condition Assessment (E14)
- Name (E41)
- Dates (E5)
- Photograph (E38)
- Location (E53)

Condition Assessment (E14_Condition_Assessment - semantic)

Node Identifiers

Node Name
Condition Assessment

Ontology Class
E14_Condition_Assessment

Relationship to Built Heritage Resource (parent)
P141i_was_assigned_by

Semantics
Built Heritage Resource (E18_Physical_Thing; parent) P141i_was_assigned_by Condition Assessment (E14_Condition_Assessment)

Node Data Type and Settings

Data type
semantic

ARCHES DESIGNER: Add additional fields



Reference Data Manager

Welcome, admin

Search for a concept...

Thesauri Collections Tools

- ▶ Address Type
- ▶ Building Type
- ▶ Condition Type
- ▶ Existence Time Span
- ▶ Geometry Qualifier
- ▶ Heritage Resource Type
- ▶ Name Type
- ▶ Resource To Resource Relationship Types
- Style Type

Condition Type (en-US) (collection)

Member Hierarchy [Add dropdown entry](#)

- fair
- good
- poor
- very poor

Labels [Add label](#)

Condition Type (preferred, en-US)

Notes [Add note](#)

Values [Add value](#)

Identifiers

Arches ID: fec2d7c-4f5b-4fd7-8cbd-b713c845af04

REFERENCE DATA MANAGER & ARCHES DESIGNER:
Add new terms



Reference Data Manager

- **Manages controlled vocabularies i.e. the terminology that Arches uses to populate data entry lists and fuel more meaningful searches**
- **Ensures consistent data entry even when multiple terms exist for a single concept**

DATA MANAGEMENT TOOLS

ARCHES DESIGNER

Defines data model,
i.e. data fields, how
they are organized
and accessed



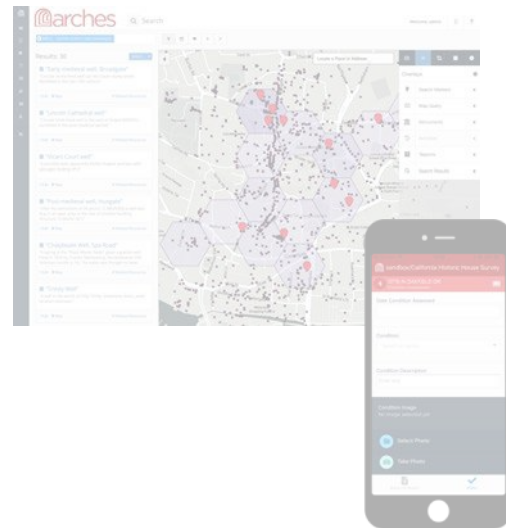
REFERENCE DATA MANAGER

Defines controlled
vocabularies
for data entry and
search



RESOURCE MANAGER

Manages data entry,
using the data fields
and values created in
Arches Designer &
Reference Data
Manager.



Resource Manager

- Create new resource records
- Add/edit/delete data on existing resources
- Review Edit History
- View/Approve provisional edits

← → ↺ 🏠 v4sandbox.archesproject.org/add-resource/cb913590-1acc-11ea-b337-02676970ea56 ... 🛡️ ⭐

Getting Started Open Source Hypothesis Bookmarkl...

Manage ... 🏛️ New Resource


Welcome, Lindsey 🔍 ?

Find a card...
+ Expand - Collapse

New Resource (Heritage Built Resources)

- Alterations
- Designation or Protection
- Heritage Resource Types
- Resource Type Classification
- External Identifiers
- Reference Images
- Keyword
- Name
- Condition Assessment
- Location
- Start and End Dates
- Evaluation
- Description
- Measurements
- Place
- Architectural Components

🔍 Related Resources



Welcome to Arches' Resource Editor

You are about to create a new resource record. Select any data card from the list on the left and start entering information.
Don't worry if you decide not to enter any data just yet.
Arches will create your new resource record once you've saved a data entry card.

RESOURCE MANAGER: Enter multiple names



Manage

Statue of Liberty

Welcome, Lindsey

?

Find a card...

+ Expand - Collapse

Statue of Liberty (Heritage Built Resource)

Alterations

Designation or Protection

Heritage Resource Types

Resource Type Classification

External Identifiers

Reference Images

Keyword

Name

Name Type: Primary

Name Type: Historic

Condition Assessment

Location

Start and End Dates

Evaluation

Description

Measurements

Place

Architectural Components

Related Resources

New Name

Name

Enter a name for the heritage resource and name type (i.e. Primary, Alternative, etc.) You may add additional names as necessary.

Name Type

Select an option

Name

Enter text

+ Add

RESOURCE MANAGER: Enter location



Manage <Name> Welcome, Lindsey

Find a card... + Expand - Collapse

<Name> (Heritage Built Resources)

- Alterations
- Designation or Protection
- Heritage Resource Types
- Resource Type Classification
- External Identifiers
- Photographs**
- Keyword
- Name
- Condition Assessment
- Location
- Start and End Dates
- Evaluation
- Description
- Measurements
- Place
- Architectural Components

Related Resources

New Photographs

Photographs

Upload a reference image(s) for the resource.

Reference Image

+ Add Files...

+ Add

RESOURCE MANAGER: Upload a photograph



Manage ... Statue of Liberty Welcome, Lindsey

Find a card... + Expand - Collapse

Statue of Liberty (Built Heritage Resource)

- Alterations
- Designation or Protection
- Heritage Resource Types
- Resource Type Classification
- External Identifiers
- Photographs
- Keyword
- Name
- Condition Assessment**
- Location
- Start and End Dates
- Evaluation
- Description
- Measurements
- Place
- Architectural Components

Related Resources

New Condition Assessment

Condition Assessment

Condition Image

+ Add files...

Condition Type

Select an option

+ Add

RESOURCE MANAGER: Assess condition

Manage... Statue of Liberty


Welcome, admin

Find a card...
+ Expand - Collapse

Statue of Liberty (Heritage Built Resource)

- Alterations
- Designation or Protection
- Heritage Resource Types
- Resource Type Classification
- External Identifiers
- Photographs
- Keyword
- Name
- Condition Assessment
- Location
- Start and End Dates
- Evaluation
- Description
- Measurements
- Place
- Architectural Components

Related Resources



Search

mapbox

Mapbox © OpenStreetMap Improve this map © DigitalGlobe

Alterations

No data added yet for Alterations

Designation or Protection

No data added yet for Designation or Protection

RESOURCE MANAGER: Review edit history


Manage ... 3715 N OAKFIELD DR Welcome, admin

Find a card...
+ Expand - Collapse

3715 N OAKFIELD DR (Heritage Resource)

- Resource Type Classification
- Architectural Components
- Reference Images
- Condition Assessment
- Keyword
- Alterations
- External Identifiers
- Start and End Dates
- Designation or Protection
- Description
- Evaluation
- Heritage Resource Types
- Measurements
- Place
- Name

Related Resources



This resource has provisional edits (not displayed in this report) that are pending review

Resource Type Classification	No data added yet for Resource Type Classification
Architectural Components	No data added yet for Architectural Components

RESOURCE MANAGER: Review provisional edits

DATA MANAGEMENT TOOLS

ARCHES DESIGNER

Defines data model,
i.e. data fields, how
they are organized
and accessed



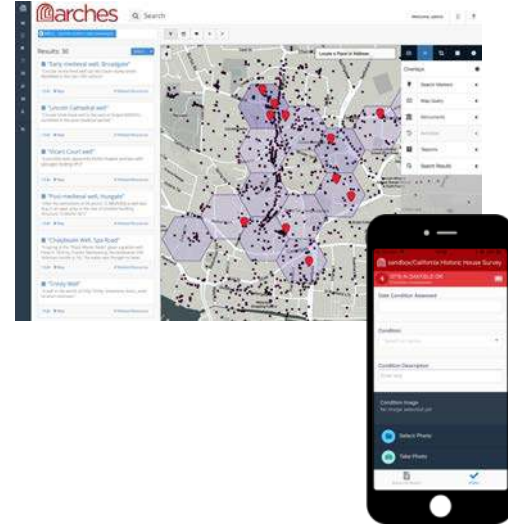
REFERENCE DATA MANAGER

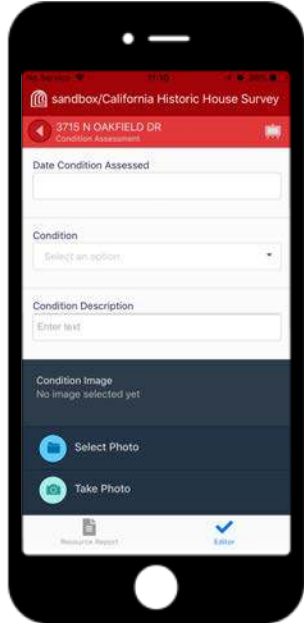
Defines controlled
vocabularies
for data entry and
search



RESOURCE MANAGER

Manages data entry,
using the data fields
and values created in
Arches Designer &
Reference Data
Manager.





Arches Collector, v.0.2.1

- Companion mobile app for Arches (v4.4.3)
- Available for iOS & Android mobile devices
- **Arches Collector Manager** interface to define data collection parameters
- Webinar on Arches Collector available on archesproject.org/collector

Coming Next!

Intro to the Arches Platform Upcoming Webinars

Part 1

Capabilities

- Data Management
- Data Discovery & Visualization

Part 2

Data Management Tools

- Arches Collector – Mobile App
- Resource Manager
- Arches Designer
- Reference Data Manager

Part 3

Data Technology Concepts

- Data Standards
- Semantics/ Ontologies (incl. CIDOC CRM)
- Controlled Vocabularies
- Fuzzy Dates

Part 4

Information Architecture

- Software Stack
- Software Standards

Arches Q&A

- Thank you -

Share your feedback: contact@archesproject.org

Community Support - Arches Forum: www.groups.google.com/archesproject

Webinar repository – www.archesproject.org/videos

